

# THE DOMAIN NAME INDUSTRY BRIEF

## Q3 2013 HIGHLIGHTS

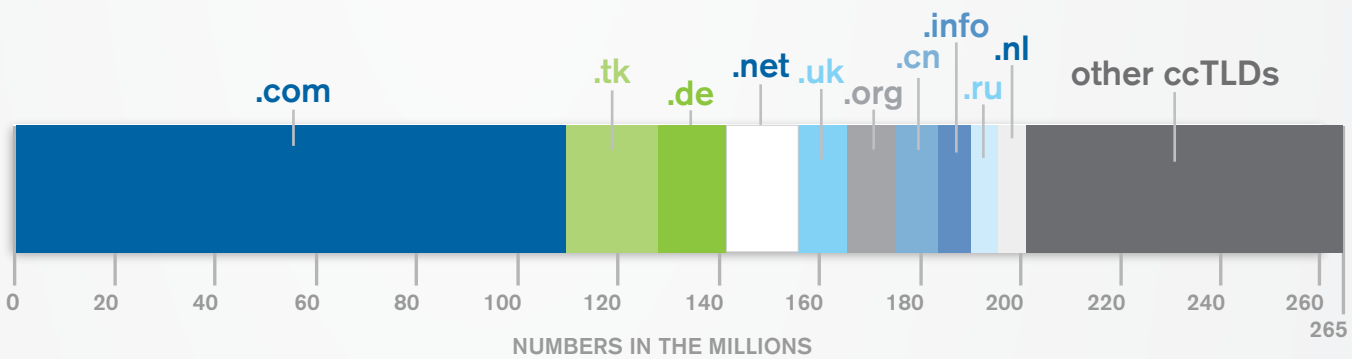
### ABOUT VERISIGN

As the global leader in domain names, Verisign powers the invisible navigation that takes people to where they want to go on the Internet. For more than 15 years, Verisign has operated the infrastructure for a portfolio of top-level domains that today include .com, .net, .tv, .edu, .gov, .jobs, .name and .cc, as well as two of the world's 13 Internet root servers. Verisign's product suite also includes Distributed Denial of Service (DDoS) Protection Services, iDefense® Security Intelligence Services and Managed DNS.

### Q3 2013 DOMAIN NAME REGISTRATIONS

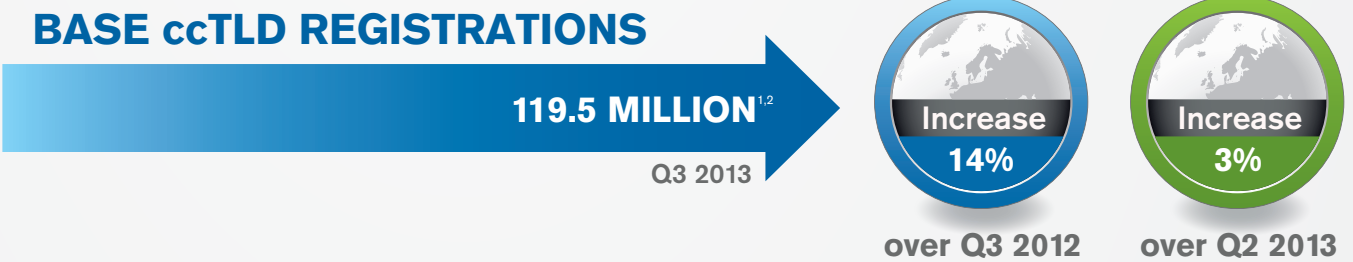


### LARGEST TLDs BY ZONE SIZE IN Q3 2013



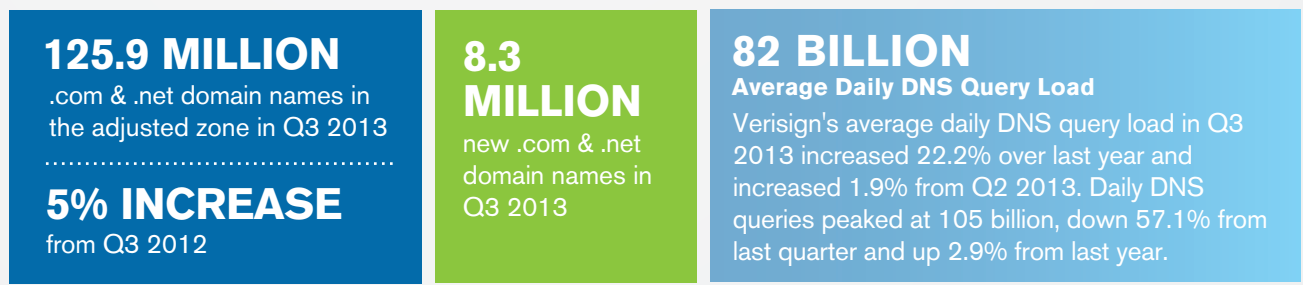
### COUNTRY CODE TOP-LEVEL DOMAIN NAMES (ccTLDs)

ccTLDs are designated for use by countries and territories.



### GROWTH OF .COM & .NET

Verisign is the global registry operator for .com and .net.



### THE DOMAIN NAME INDUSTRY BRIEF

As the global registry operator for .com and .net, Verisign reviews the state of the domain name industry through a variety of statistical and analytical research. As the global leader in domain names, Verisign provides this briefing to highlight important trends in domain name registration, including key performance indicators and growth opportunities, to industry analysts, media and businesses.

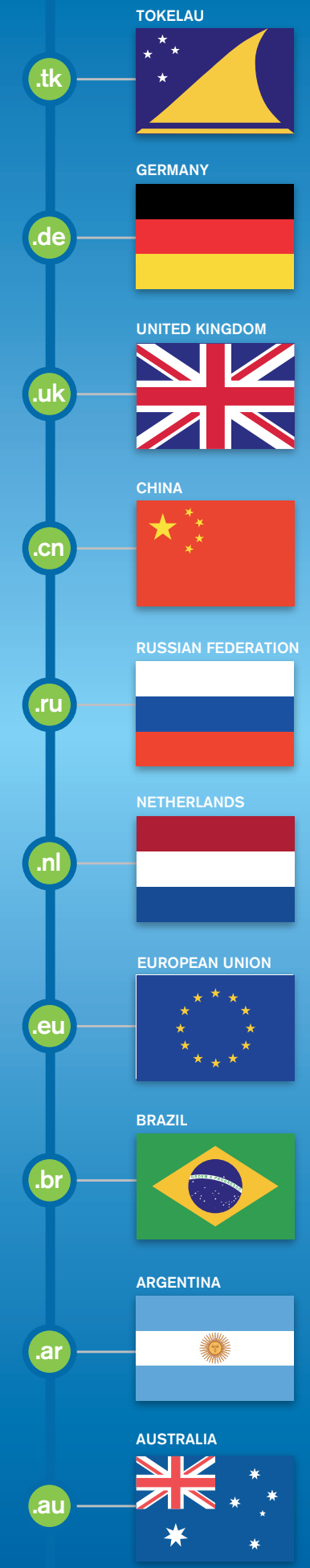
To access the Domain Name Industry Brief archives, visit [VerisignInc.com/DNIB](http://VerisignInc.com/DNIB).

1 The gTLD and ccTLD data cited are estimates as of the time of such report and subject to change as more complete data is received.  
2 Total includes additional tracking of ccTLD Internationalized Domain Names.  
3 The number of ccTLD extensions cited in this report is published by IANA.

Sources: For gTLD and ccTLD data with Zooknic as a source, the Zooknic analysis uses a comparison of domain name root zone file changes supplemented with Whois data on a statistical sample of domain names which lists the registrar responsible for a particular domain name and the location of the registrant. The data has a margin of error based on the sample size and market size. The ccTLD data is based on analysis of root zone files. For more information, see [ZookNIC.com](http://ZookNIC.com). Information on or accessible through this website is not part of this blog post.

### TEN LARGEST ccTLDs

Combined, these account for 65% of all ccTLD domain name registrations worldwide.<sup>3</sup>



**VERISIGN®**