

## Chapter 1

# Getting Started with Visual Basic 2008

I'm assuming that you have installed one of the several versions of Visual Studio 2008. For this book, I used the Professional Edition of Visual Studio, but just about everything discussed in this book applies to the Standard Edition as well. Some of the features of the Professional Edition that are not supported by the Standard Edition concern database tools, which are discussed in Chapters 21 through 24 of this book.

You may have even already explored the new environment on your own, but this book starts with an overview of Visual Studio and its basic tools. It doesn't even require any knowledge of VB 6, just some familiarity with programming at large. As you already know, Visual Basic 2008 is just one of the languages you can use to build applications with Visual Studio 2008. I happen to be convinced that it is also the simplest, most convenient language, but this isn't really the issue; I'm assuming you have your reasons to code in VB, or else you wouldn't be reading this book. What you should keep in mind is that Visual Studio 2008 is an integrated environment for building, testing, debugging, and deploying a variety of applications: Windows applications, web applications, classes and custom controls, and even console applications. It provides numerous tools for automating the development process, visual tools for performing many common design and programming tasks, and more features than any author would hope to cover.

In this chapter, you'll learn how to do the following:

- ◆ Navigate the integrated development environment of Visual Studio
- ◆ Understand the basics of a Windows application

## Exploring the Integrated Development Environment

Visual Basic 2008 is just one of the languages you can use to program your applications. The language is only one aspect of a Windows application. The visual interface of the application isn't tied to a specific language, and the same tools you'll use to develop your application's interface will also be used by all programmers, regardless of the language they'll use to code the application.

To simplify the process of application development, Visual Studio provides an environment that's common to all languages, which is known as an *integrated development environment (IDE)*. The purpose of the IDE is to enable the developer to do as much as possible with visual tools, before writing code.

The IDE provides tools for designing, executing, and debugging your applications. It will be a while before you explore all the elements of the IDE, and I will explain the various items as needed in the course of the book. In this section, you'll look at the basic components of the IDE

needed to build simple Windows applications. You'll learn how its tools allow you to quickly design the user interface of your application, as well as how to program the application.

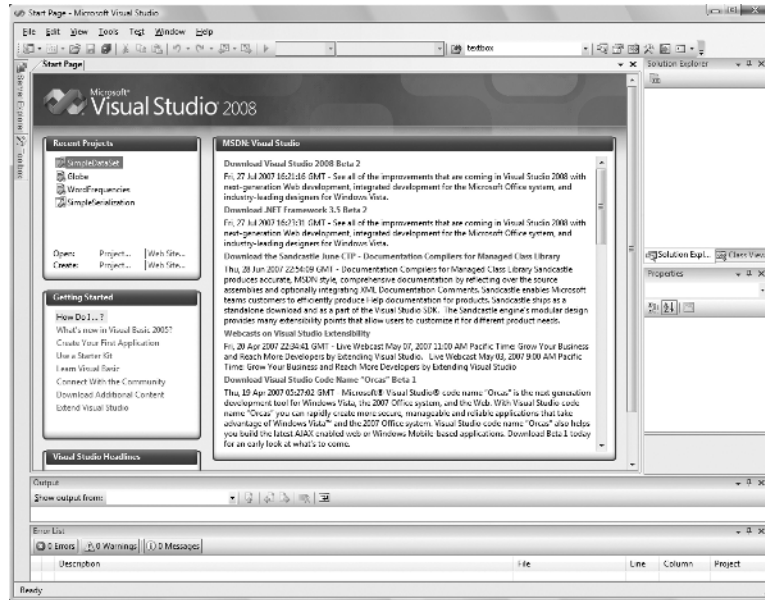
The IDE is your second desktop, and you'll be spending most of your productive hours in this environment.

### The Start Page

When you run Visual Studio 2008 for the first time, you will be prompted to select the type of projects you plan to build with Visual Studio, so that the environment can be optimized for that specific type of development. I'm assuming that you have initially selected the Visual Basic Development settings, which will optimize your copy of Visual Studio for building Windows and web applications with Visual Basic 2008. You can always change these settings, as explained at the end of this section.

After the initial configuration, you will see a window similar to the one shown in Figure 1.1. The Recent Projects pane will be empty, of course, unless you have already created some test projects. Visual Studio 2008 will detect the settings of a previous installation, so if you're upgrading from an earlier version of Visual Studio, the initial screen will not be identical to the one shown in Figure 1.1.

**FIGURE 1.1**  
This is what you'll see when you start Visual Studio for the first time.



On the Start Page of Visual Studio, you will see the following panes:

**Recent Projects** Here you see a list of the projects you opened most recently with Visual Studio, and you can select the one you want to open again — chances are that you will continue working on the same project as the last time. Each project's name is a hyperlink, and you can open it by clicking its name. At the bottom of the Recent Projects section are two hyperlinks, for opening or creating another project.

**MSDN: Visual Studio** This section is a browser window that displays an MSDN (the Microsoft Developer Network, which is the definitive resource for all Microsoft technologies and products) page when the computer is connected to the Internet. In this section,

you will see news about Visual Studio, the supported languages, articles, and other interesting bits of information.

**Getting Started** This section contains links to basic programming tasks in the product's documentation.

**Visual Studio Headlines** This section contains links to announcements and other news of interest to VB developers.

Most developers will skip the Start Page. To do so, open the Tools menu and choose the Import And Export Settings command to start a configuration wizard. In the first dialog box of the wizard, select the Reset All Settings check box and click the Next button. The next screen of the wizard prompts you for the location where the new settings will be saved, so that Visual Studio can read them every time it starts. Leave the default location as is and click Next again to see the last screen of the wizard, in which you're prompted to select a default collection of settings. This collection depends on the options you've installed on your system. I installed Visual Studio 2008 with Visual Basic only on my system, and I was offered the following options: General Development Settings, Visual Basic Development Settings, and Web Development Settings. For the default configuration of my copy of Visual Studio, and for the purposes of this book, I chose the Visual Basic Development Settings, so that Visual Studio could optimize the environment for a typical VB developer. Click the Finish button to see a summary of the process and then close the wizard.

## Starting a New Project

At this point, you can create a new project and start working with Visual Studio. To best explain the various items of the IDE, we will build a simple form. The form is the window of your application — it's what users will see on their Desktop when they run your application.

Open the File menu and choose New Project, or click Create Project/Solution in the Start Page. In the New Project dialog box that pops up (see Figure 1.2), you'll see a list of project types you can create with Visual Studio. The most important ones are Windows Forms Applications, which are typical Windows applications with one or more forms (windows); Console Applications, which are simple applications that interact with the user through a text window (the console); Windows Forms Control Libraries, which are collections of custom controls; and Class Libraries, which are collections of classes. These are the project types we'll cover in depth in this book.

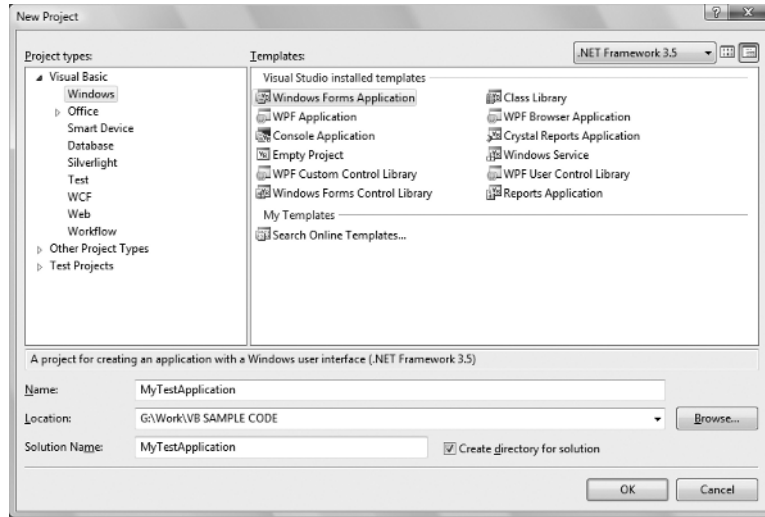
If you have installed Visual Basic 2008 Express Edition, you will see fewer project types in the New Project dialog box, but the projects discussed in this book are included.

Notice the Create Directory For Solution check box in the dialog box of Figure 1.2. By default, Visual Studio creates a new folder for the project under the folder you have specified in the Location box. If you want to put together a short application to test a feature of the language, or perform some trivial task, you may not wish to save the project. In this case, just clear the check box to skip the creation of a new project folder.

You can always save a project at any time by choosing the Save All command from the File menu. You'll be prompted at that point about the project's folder, and Visual Studio will save the project under the folder you specified. If you decide to discard the project, you can create a new project or close Visual Studio. Visual Studio will prompt you about an open project that hasn't been saved yet, and you can choose not to save it.

You may discover at some point that you have created too many projects, which you don't really need. You can remove these projects from your system by deleting the corresponding folders — no special action is required. You'll know it's time to remove the unneeded project folder when Visual Studio suggests project names such as WindowsApplication9 or WindowsApplication49.

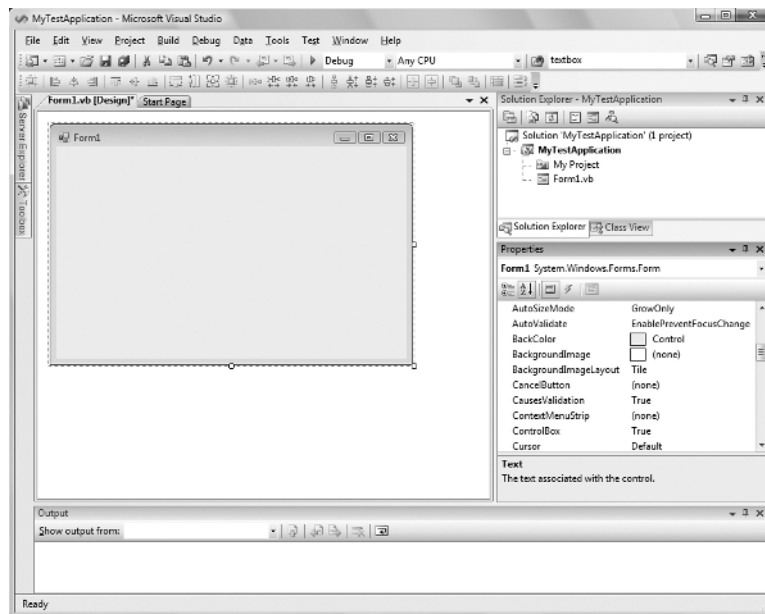
**FIGURE 1.2**  
The New Project dialog box



For our project, select the Windows Forms Application template; Visual Studio suggests the name `WindowsApplication1` as the project name. Change it to **MyTestApplication**, select the Create Directory For Solution check box, and then click the OK button to create the new project.

What you see now is the Visual Studio IDE displaying the Form Designer for a new project, as shown in Figure 1.3. The main window of your copy of Visual Studio may be slightly different, but don't worry about it. I'll go through all the components you need to access in the process of designing, coding, and testing a Windows application.

**FIGURE 1.3**  
The integrated development environment of Visual Studio 2008 for a new project



The new project contains a form already: the *Form1* component in the Solution Explorer. The main window of the IDE is the Form Designer, and the gray surface on it is the window of your new application in design mode. Using the Form Designer, you'll be able to design the visible interface of the application (place various components of the Windows interface on the form and set their properties) and then program the application.

The default environment is rather crowded, so let's hide a few of the toolbars that we won't use in the projects of the first few chapters. You can always show any of the toolbars at any time. Open the View menu and choose Toolbars. You'll see a submenu with 28 commands that are toggles. Each command corresponds to a toolbar, and you can turn the corresponding toolbar on or off by clicking one of the commands in the Toolbars submenu. For now, turn off all the toolbars except for the Layout and Standard toolbars. These are the toolbars shown by default and you shouldn't hide them; if you do, this is the place to make them visible again.

The last item in the Toolbars submenu is the Customize command, which leads to a dialog box in which you can specify which of the toolbars and which of the commands you want to see. After you have established a work pattern, use this menu to customize the environment for the way you want to work with Visual Studio. You can hide just about any component of the IDE, except for the main menu — after all, you have to be able to undo the changes!

### Using the Windows Form Designer

To design the form, you must place on it all the controls you want to display to the user at runtime. The controls are the components of the Windows interface (buttons, text boxes, radio buttons, lists, and so on). Open the Toolbox by moving the pointer over the Toolbox tab at the far left; the Toolbox, shown in Figure 1.4, pulls out. This Toolbox contains an icon for each control you can use on your form.

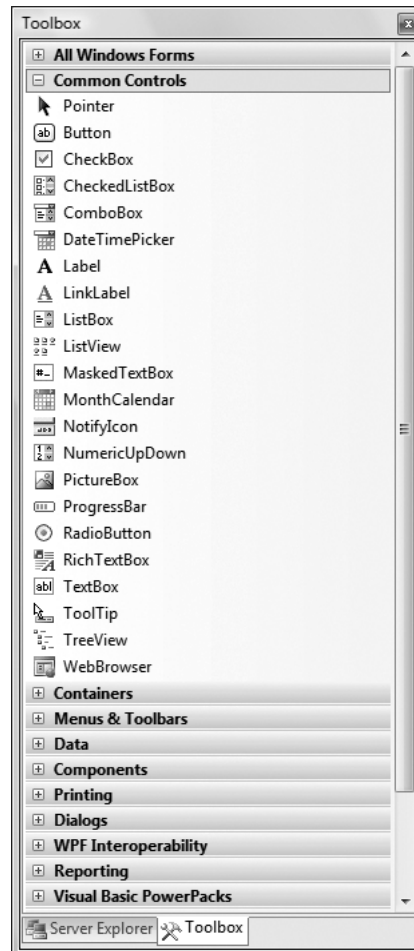
The controls are organized into groups according to each control's function on the interface. In the first part of the book, we'll create simple Windows applications and we'll use the controls on the Common Controls tab. When you develop web applications, you will see a different set of icons in the Toolbox.

To place a control on the form, you can double-click the icon of the control. A new instance with a default size will be placed on the form. Then you can position and resize it with the mouse. Or you can select the control from the Toolbox with the mouse and then click and drag the mouse over the form and draw the outline of the control. A new instance of the control will be placed on the form, and it will fill the rectangle you specified with the mouse. Start by placing a TextBox control on the form.

The control's properties will be displayed in the Properties window (see Figure 1.5). This window, at the far right edge of the IDE and below the Solution Explorer, displays the properties of the selected control on the form. If the Properties window is not visible, open the View menu and choose Properties Window, or press F4. If no control is selected, the properties of the selected item in the Solution Explorer are displayed.

In the Properties window, also known as the Properties Browser, you see the properties that determine the appearance of the control and (in some cases) its function. The properties are organized in categories according to their role. The properties that determine the appearance of the control are listed alphabetically under the header Appearance, the properties that determine the control's behavior are listed alphabetically under the header Behavior, and so on. You can click the AZ button on the window's title bar to display all properties in alphabetical order. After you familiarize yourself with the basic properties, you will most likely switch to the alphabetical list.

**FIGURE 1.4**  
Windows Forms Toolbox  
of the Visual Studio IDE



### REARRANGING THE IDE WINDOWS

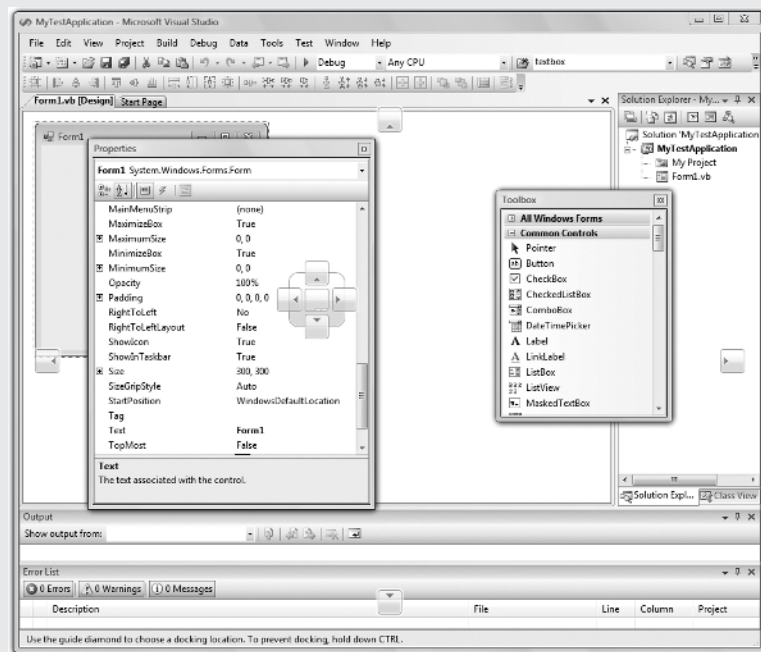
As soon as you place a control on the form, the Toolbox retracts to the left edge of the Designer. You can fix this window on the screen by clicking the icon with the pin on the Toolbox's toolbar. (It's the icon next to the Close icon at the upper-right corner of the Toolbox window, and it appears only when the Toolbox window is docked, but not while it's floating.)

You can easily rearrange the various windows that make up the IDE by moving them around with the mouse. Move the pointer to a window's title bar, press the left mouse button, and drag the window around. A window may not follow the mouse, because its position is locked. In this case, click the pin icon in the upper-right corner of the window to unlock the window's position and then move it around with the mouse.

As you move the window, eight semitransparent buttons with arrows appear on the screen, indicating the area where the window can be docked. Keep moving the window until the pointer hovers over

one of these buttons, and the docking area appears in semitransparent blue color. Find the desired docking location for the window and release the mouse. If you release the mouse while the pointer is not on top of an arrow, the window is not docked. Instead, it remains at the current location as a floating window, and you can move it around at will with your mouse.

Most developers would rather work with docked windows, and the default positions of the IDE windows are quite convenient. If you want to open even more windows and arrange them differently on the screen, use the docking feature of the IDE to dock the additional windows.

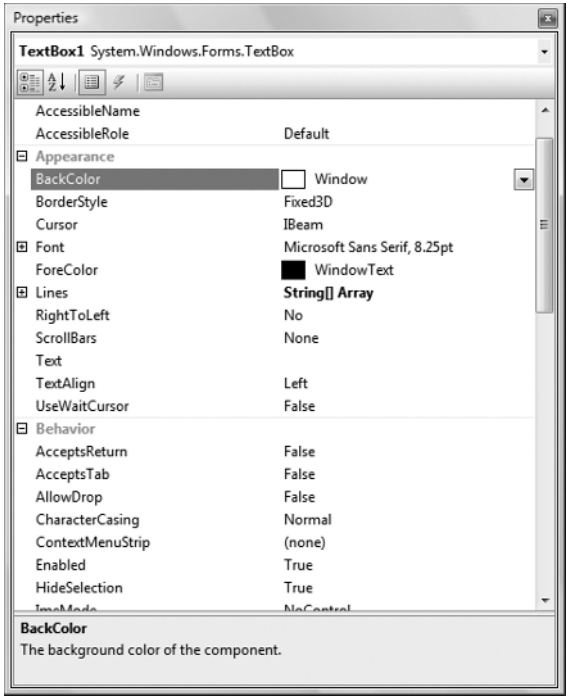


Locate the TextBox control's Text property and set it to **My TextBox Control** by entering the string into the box next to the property name. The control's Text property is the string that appears in the control (the control's caption), and most controls have a Text property.

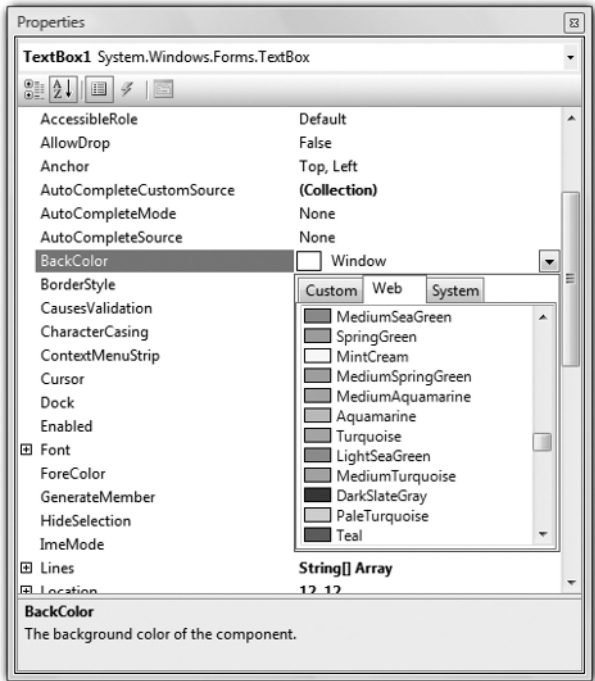
Next locate its BackColor property and select it with the mouse. A button with an arrow appears next to the current setting of the property. Click this button, and you'll see a dialog box with three tabs (Custom, Web, and System), as shown in Figure 1.6. In this dialog box, you can select the color that will fill the control's background. Set the control's background color to yellow and notice that the control's appearance changes on the form.

One of the settings you'll want to change is the font of the various controls. While the TextBox control is still selected on the form, locate the control's Font property in the Properties window. You can click the plus sign in front of the property name and set the individual properties of the font, or you can click the ellipsis button to invoke the Font dialog box. Here you can set the control's font and its attributes and then click OK to close the dialog box. Set the TextBox control's Font property to Verdana, 14 points, bold. As soon as you close the Font dialog box, the control on the form is adjusted to the new setting.

**FIGURE 1.5**  
Properties of a TextBox control



**FIGURE 1.6**  
Setting a color property in the Properties window





There's a good chance that the string you assigned to the control's `Text` property won't fit in the control's width when rendered in the new font. Select the control on the form with the mouse, and you will see eight handles along its perimeter. Rest the pointer over any of these handles, and it will assume a shape indicating the direction in which you can resize the control. Make the control long enough to fit the entire string. If you have to, resize the form as well. Click somewhere on the form, and when the handles along its perimeter appear, resize it with the mouse.

Some controls, such as the `Label`, `Button`, and `CheckBox` controls, support the `AutoSize` property, which determines whether the control is resized automatically to accommodate its caption. The `TextBox` control, as well as many others, doesn't support the `AutoSize` property. If you attempt to make the control tall enough to accommodate a few lines of text, you'll realize that you can't change the control's height. By default, the `TextBox` control accepts a single line of text, and you must set its `MultiLine` property to `True` to resize the `TextBox` control vertically.

## Real World Scenario

### THE FONT IS A DESIGN ELEMENT

Like documents, forms should be designed carefully and follow the rules of a printed page design. At the very least, you shouldn't use multiple fonts on your forms, just as you shouldn't mix different fonts on a printed page. You could use two font families on rare occasions, but you shouldn't overload your form. You also shouldn't use the bold style in excess.

To avoid adjusting the `Font` property of multiple controls on the form, you should set the form's font first, because each control you place on a form inherits the form's font. If you change the form's font, the controls will be adjusted accordingly, but this may throw off the alignment of the controls on the form. You should experiment with a few `Label` controls, select a font that you like that's appropriate for your interface (you shouldn't use a handwritten style with a business application, for example) and then set the form's `Font` property to the desired font. Every time you add a new form to the application, you should start by setting its `Font` property to the same font, so that the entire application will have a consistent look.

The font is the most basic design element, whether you're designing forms or a document. Various components of the form may have a different font size, even a different style (like bold or italics), but there must be a dominant font family that determines the look of the form. The `Verdana` family was designed for viewing documents on computer monitors and is a popular choice. Another great choice is `Segoe UI`, a new font family introduced with Windows Vista. The `Segoe Print` font has a distinguished handwritten style, and you can use it with graphics applications.

The second most important design element is color, but you shouldn't get too creative with colors unless you're a designer. I recommend that you stay with the default colors and use similar shades to differentiate a few elements of the interface.

The design of a modern interface has become a new discipline in application development, and there are tools for designing interfaces. One of them is Microsoft's `Expression Studio`, which enables designers to design the interface and developers to write code, without breaking each other's work. You can download a trial version of `Expression Studio` from [www.microsoft.com/expression](http://www.microsoft.com/expression).

So far, you've manipulated properties that determine the appearance of the control. Now you'll change a property that determines not only the appearance, but also the function of the control. Locate the `MultiLine` property. Its current setting is `False`. Expand the list of available settings

and change it to True. (You can also change it by double-clicking the name of the property. This action toggles the True/False settings.) Switch to the form, select the TextBox control, and make it as tall as you wish.

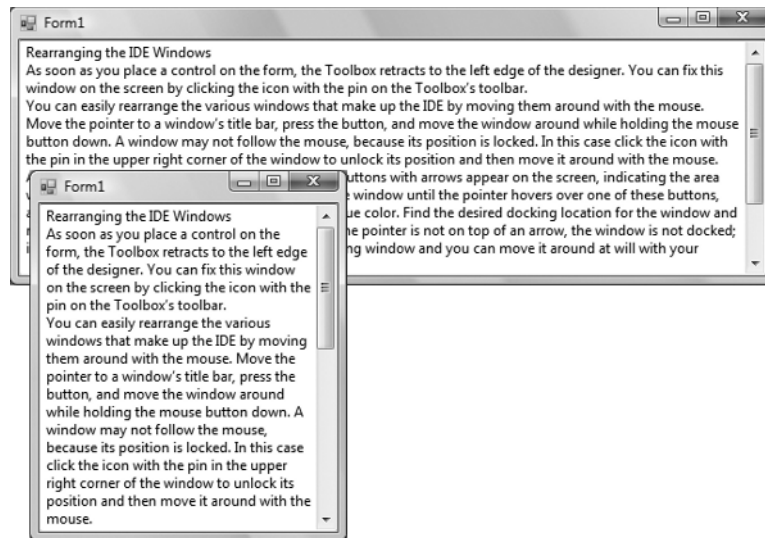
The `Multiline` property determines whether the TextBox control can accept one (if `Multiline = False`) or more (if `Multiline = True`) lines of text. Set this property to True, go back to the Text property, set it to a long string, and press Enter. The control breaks the long text into multiple lines. If you resize the control, the lines will change, but the entire string will fit in the control because the control's `WordWrap` property is True. Set it to False to see how the string will be rendered on the control.

Multiline TextBox controls usually have a vertical scroll bar so users can quickly locate the section of text that they're interested in. Locate the control's `ScrollBars` property and expand the list of possible settings by clicking the button with the arrow. This property's settings are *None*, *Vertical*, *Horizontal*, and *Both*. Set it to *Vertical*, assign a very long string to its Text property, and watch how the control handles the text. At design time, you can't scroll the text on the control; if you attempt to move the scroll bar, the entire control will be scrolled. The scroll bar will work as expected at runtime (it will scroll the text vertically).

You can also make the control fill the entire form. Start by deleting all other controls you may have placed on the form and then select the multiline TextBox. Locate the `Dock` property in the Properties window and keep double-clicking the name of the property until its setting changes to *Fill*. (You'll learn a lot more about docking controls in Chapter 7, "Working with Forms.") The TextBox control fills the form and is resized as you resize the form, both at design time and runtime.

To examine the control's behavior at runtime, press F5. The application will be compiled, and a few moments later, a window filled with a TextBox control will appear on the Desktop (like the one shown in Figure 1.7). This is what the users of your application would see (if this were an application worth distributing, of course).

**FIGURE 1.7**  
A TextBox control displaying multiple text lines



Enter some text on the control, select part of the text, and copy it to the Clipboard by pressing `Ctrl+C`. You can also copy text from any other Windows application and paste it on the TextBox control. Right-click the text on the control and you will see the same context menu you get with

Notepad; you can even change the reading order of the text — not that you'd want to do that with a Western language. When you're finished, open the Debug menu and choose Stop Debugging. This will terminate your application's execution, and you'll be returned to the IDE. The Stop Debugging command is also available as a button with a blue square icon on the toolbar. Finally, you can stop the running application by clicking the Close button in the application's window.

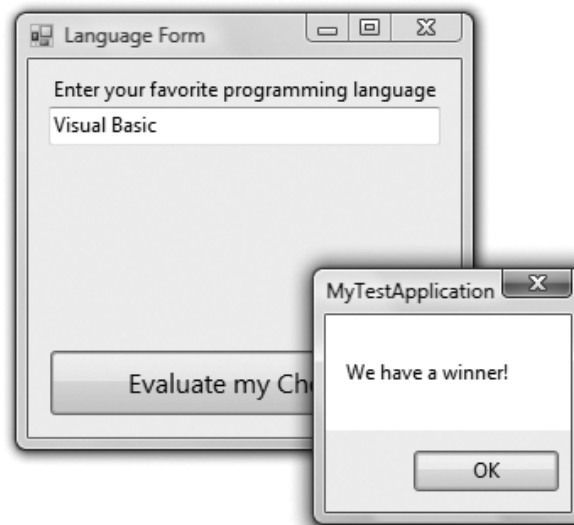
The design of a new application starts with the design of the application's form, which is the application's user interface, or UI. The design of the form determines to a large extent the functionality of the application. In effect, the controls on the form determine how the application will interact with the user. The form itself is a prototype, and you can demonstrate it to a customer before even adding a single line of code. By placing controls on the form and setting their properties, you're implementing a lot of functionality before coding the application. The TextBox control with the settings discussed in this section is a functional text editor.

## Creating Your First VB Application

In this section, we'll develop a simple application to demonstrate not only the design of the interface, but also the code behind the interface. We'll build an application that allows the user to enter the name of his favorite programming language, and the application will evaluate the choice. Objectively, VB is a step ahead of all other languages, and it will receive the best evaluation. All other languages get the same grade — good — but not VB.

The project is called `WindowsApplication1`. You can download the project from the book's website and examine it, but I suggest you follow the steps outlined in this section to build the project from scratch. Start a new project and use the default name, **WindowsApplication1**, and place a TextBox and a Button control on the form. Use the mouse to position and resize the controls on the form, as shown in Figure 1.8.

**FIGURE 1.8**  
A simple application that processes a user-supplied string



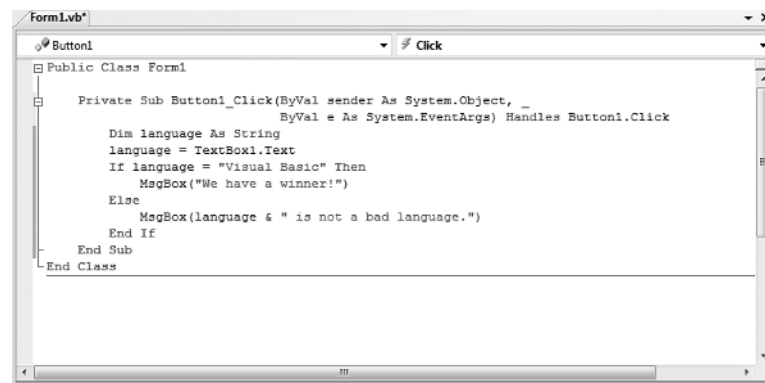
Start by setting the form's `Font` property to Segoe UI, 9 pt. Arrange and size the controls as shown in Figure 1.8. Then place a Label control on the form and set its `Text` property to **Enter your favorite programming language**. The Label will be resized according to its caption, because

the control's `AutoSize` property is `True`. As you move the controls around on the form, you'll see some blue lines connecting the edges of the controls when they're aligned. These lines are called *snap lines*, and they allow you to align controls on the form.

Now you must insert some code to evaluate the user's favorite language. Windows applications are made up of small code segments, called *event handlers*, which react to specific actions such as the click of a button, the selection of a menu command, the click of a check box, and so on. In the case of our example, we want to program the action of clicking the button. When the user clicks the button, we want to execute some code that will display a message.

To insert some code behind the Button control, double-click the control. You'll see the code window of the application, which is shown in Figure 1.9. You will see only the definition of the procedure, not the code that is shown between the two statements in the figure. The line `Private ...` is too long to fit on the printed page, so I inserted a *line continuation character* (an underscore) to break it into two lines. When a line is too long, you can break it into two (or more) lines by inserting this character. Alternatively, you can turn on the `WordWrap` feature of the editor (you'll see shortly how to adjust the editor's properties). Notice that I also inserted quite a bit of space before the second half of the first code line. It's customary to indent continued lines so they can be easily distinguished from the other lines. If you enter the line continuation character in the editor, the following line will be indented automatically.

**FIGURE 1.9**  
Outline of a subroutine that handles the Click event of a Button control



The editor opens a subroutine, which is delimited by the following statements:

```
Private Sub Button1_Click(ByVal sender As System.Object, _
    ByVal e As System.EventArgs) Handles Button1.Click

End Sub
```

At the top of the main pane of the Designer, you will see two tabs named after the form: the `Form1.vb [Design]` tab and the `Form1.vb` tab. The first tab is the Windows Form Designer (in which you build the interface of the application with visual tools), and the second is the code editor (in which you insert the code behind the interface). At the top of the code editor, which is what you see in Figure 1.9, are two `ComboBoxes`. The one on the left contains the names of the controls on the form. The one on the right contains the names of events each control recognizes. When you select a control (or an object, in general) in the left list, the other list's contents are adjusted accordingly. To program a specific event of a specific control, select the name of the

control in the left list (the Objects list) and the name of the event in the right list (the Events list). While `Button1` is selected in the Objects list, open the Events list to see the events to which the button can react.

The `Click` event happens to be the default event of the `Button` control, so when you double-click a `Button` on the form, you're taken to the `Button1_Click` subroutine. This subroutine is an event handler, which is invoked automatically every time an event takes place. The event of interest in our example is the `Click` event of the `Button1` control. Every time the `Button1` control on the form is clicked, the `Button1_Click` subroutine is activated. To react to the `Click` event of the button, you must insert the appropriate code in this subroutine.

There are more than two dozen events for the `Button` control, and it is among the simpler controls (after all, what can you do to a button besides clicking it?). Most of the controls recognize a very large number of events.

The definition of the event handler can't be modified; this is the event handler's signature (the arguments it passes to the application). All event handlers in VB 2008 pass two arguments to the application: the *sender* argument, which is an object that represents the control that fired the event, and the *e* argument, which provides additional information about the event.

The name of the subroutine is made up of the name of the control, followed by an underscore and the name of the event. This is just the default name, and you can change it to anything you like (such as `EvaluateLanguage`, for this example, or `StartCalculations`). What makes this subroutine an event handler is the keyword `Handles` at the end of the statement. The `Handles` keyword tells the compiler which event this subroutine is supposed to handle. `Button1.Click` is the `Click` event of the `Button1` control. If there were another button on the form, the `Button2` control, you'd have to write code for a subroutine that would handle the `Button2.Click` event. Each control recognizes many events, and you can provide a different event handler for each control and event combination. Of course, we never program every possible event for every control.

The controls have a default behavior and handle the basic events on their own. The `TextBox` control knows how to handle keystrokes. The `CheckBox` control (a small square with a check mark) changes state by hiding or displaying the check mark every time it's clicked. The `ScrollBar` control moves its indicator (the button in the middle of the control) every time you click one of the arrows at the two ends. Because of this default behavior of the controls, you need not supply any code for the events of most controls on the form.

If you change the name of the control after you have inserted some code in an event handler, the name of the event handled by the subroutine will be automatically changed. The name of the subroutine, however, won't change. If you change the name of the `Button1` control to `btnEvaluate`, the subroutine's header will become

```
Private Sub Button1_Click(ByVal sender As System.Object, _
    ByVal e As System.EventArgs) Handles btnEvaluate.Click

End Sub
```

Rename the `Button1_Click` subroutine to `EvaluateLanguage`. You must edit the code to change the name of the event handler. I try to name the controls before adding any code to the application, so that their event handlers will be named correctly. Alternatively, you can use your own name for each event handler. The default names of the controls you place on a form are quite generic, and you should change them to something more meaningful. I usually prefix the control names with a few characters that indicate the control's type (such as `txt`, `lbl`, `btn`, and so on), followed by a meaningful name. Names such as `txtLanguage` and `btnEvaluate` make your

code far more readable. It's a good practice to change the default names of the controls as soon as you add the controls to the form. Names such as *Button1*, *Button2*, *Button3*, and so on, don't promote the readability of your code. With the exception of this first sample project, I'm using more-meaningful names for the controls used in this book's projects.

Let's add some code to the `Click` event handler of the `Button1` control. When this button is clicked, we want to examine the text in the text box. If it's *Visual Basic*, we display a message; if not, we display a different message. Insert the lines of Listing 1.1 between the `Private Sub` and `End Sub` statements. (I'm showing the entire listing here; there's no reason to retype the first and last statements.)

---

**LISTING 1.1:** Processing a User-Supplied String

```
Private Sub EvaluateLanguage(ByVal sender As System.Object, _
    ByVal e As System.EventArgs) Handles Button1.Click
    Dim language As String
    language = TextBox1.Text
    If language = "Visual Basic" Then
        MsgBox("We have a winner!")
    Else
        MsgBox(language & "is not a bad language.")
    End If
End Sub
```

---

Here's what this code does. First, it assigns the text of the `TextBox` control to the variable *language*. A *variable* is a named location in memory where a value is stored. Variables are where we store the intermediate results of our calculations when we write code. All variables are declared with a `Dim` statement and have a name and a type.

You could also declare and assign a value to the *language* variable in a single step:

```
Dim language = TextBox1.Text
```

The compiler will create a `String` variable, because the statement assigns a string to the variable. We'll come back to the topic of declaring and initializing variables in Chapter 2, "Variables and Data Types."

Then the program compares the value of the *language* variable to the literal *Visual Basic*, and depending on the outcome of the comparison, it displays one of two messages. The `MsgBox()` function displays the specified message in a small window with the OK button, as shown in Figure 1.8. Users can view the message and then click the OK button to close the message box.

Even if you're not familiar with the syntax of the language, you should be able to understand what this code does. Visual Basic is the simplest of the languages supported by Visual Studio 2008, and we will discuss the various aspects of the language in detail in the following chapters. In the meantime, you should try to understand the process of developing a Windows application: how to build the visible interface of the application and how to program the events to which you want your application to react.

The code of our first application isn't very robust. If the user doesn't enter the string with the exact spelling shown in the listing, the comparison will fail. We can convert the string to uppercase

and then compare it with *VISUAL BASIC* to eliminate differences in case. To convert a string to uppercase, use the `ToUpper` method of the `String` class. The following expression returns the string stored in the `language` variable, converted to uppercase:

```
language.ToUpper
```

We should also take into consideration the fact that the user may enter *VB* or *VB 2008*, and so on. In the following section, we'll further improve our application. You never know what users may throw at your application, so whenever possible you should try to limit their responses to the number of available choices. In our case, we can display the names of certain languages (the ones we're interested in) and force the user to select one of them.

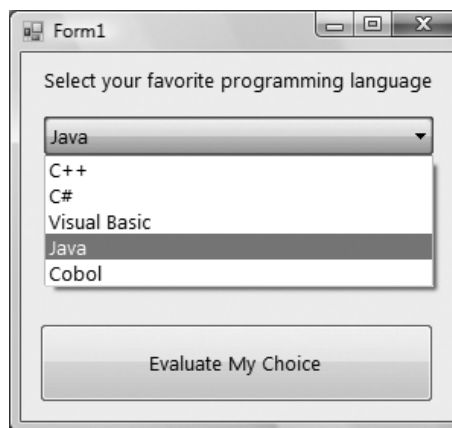
One way to display a limited number of choices is to use a `ComboBox` control. In the following section, we'll revise our sample application so that users won't have to enter the name of the language. We'll force them to select their favorite language from a list so that we won't have to validate the string supplied by the user.

### Making the Application More User-Friendly

Start a new project: the `WindowsApplication2` project. Do not select the `Create Directory For Solution` check box; we'll save the project from within the IDE. As soon as the project is created, open the `File` menu and choose `Save All` to save the project. When the `Save Project` dialog box appears, click the `Browse` button to select the folder where the project will be saved. In the `Project Location` dialog box that appears, select an existing folder or create a new folder such as **MyProjects** or **VB.NET Samples**.

Open the `Toolbox` and double-click the icon of the `ComboBox` tool. A `ComboBox` control will be placed on your form. Now place a `Button` control on the form and position it so that your form looks like the one shown in Figure 1.10. Then set the button's `Text` property to **Evaluate My Choice**.

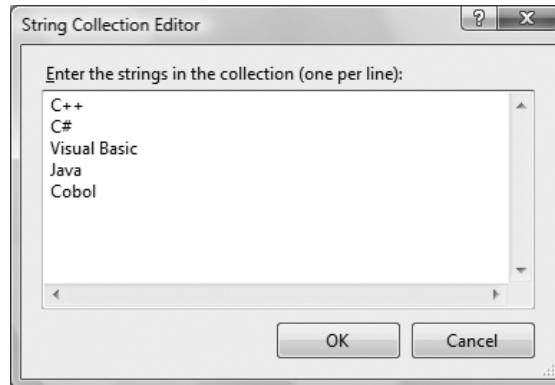
**FIGURE 1.10**  
Displaying options in a  
`ComboBox` control



We must now populate the `ComboBox` control with the valid choices. Select the `ComboBox` control on the form by clicking it with the mouse and locate its `Items` property in the `Properties` window. The setting of this property is `Collection`, which means that the `Items` property doesn't have a single value; it's a collection of items (strings, in this case). Click the ellipsis button and you'll see the `String Collection Editor` dialog box, as shown in Figure 1.11.

**FIGURE 1.11**

Click the ellipsis button next to the `Items` property of a `ComboBox` to see the String Collection Editor dialog box.



The main pane in the String Collection Editor dialog box is a `TextBox`, in which you can enter the items you want to appear in the `ComboBox` control at runtime. Enter the following strings, one per row and in the order shown here:

```
C++
C#
Visual Basic
Java
Cobol
```

Click the `OK` button to close the dialog box. The items will not appear on the control at design time, but you will see them when you run the project. Before running the project, set one more property. Locate the `ComboBox` control's `Text` property and set it to **Select your favorite programming language**. This is not an item of the list; it's the string that will initially appear on the control.

You can run the project now and see how the `ComboBox` control behaves. Press `F5` and wait a few seconds. The project will be compiled, and you'll see its form on your Desktop, on top of the Visual Studio window. I'm sure you know how the `ComboBox` control behaves in a typical Windows application, and our sample application is no exception. You can select an item on the control, either with the mouse or with the keyboard. Click the button with the arrow to expand the list and then select an item with the mouse. Or press the down or up arrow keys to scroll through the list of items. The control isn't expanded, but each time you click an arrow button, the next or previous item in the list appears on the control. Press the `Tab` key to move the focus to the `Button` control and press the spacebar to emulate a `Click` event (or simply click the `Button` control).

We haven't told the application what to do when the button is clicked, so let's go back and add some code to the project. Stop the application by clicking the `Stop` button on the toolbar (the solid black square) or by choosing `Debug > Stop Debugging` from the main menu. When the form appears in design mode, double-click the button, and the code window will open, displaying an empty `Click` event handler. Insert the statements shown in Listing 1.2 between the `Private Sub` and `End Sub` statements.



---

**LISTING 1.2:** The Revised *Click* Event Handler

---

```
Private Sub Button1_Click(ByVal sender As System.Object, _
    ByVal e As System.EventArgs) Handles Button1.Click
    Dim language As String
    language = ComboBox1.Text
    If language = "Visual Basic" Then
        MsgBox("We have a winner!")
    Else
        MsgBox(language & "is not a bad language.")
    End If
End Sub
```

---

When the form is first displayed, a string that doesn't correspond to a language is displayed in the ComboBox control. We can preselect one of the items from within our code when the form is first loaded. When a form is loaded, the Load event of the Form object is raised. Double-click somewhere on the form and the editor will open the form's Load event handler:

```
Private Sub Form1_Load(ByVal sender As System.Object, _
    ByVal e As System.EventArgs) Handles MyBase.Load
End Sub
```

Enter the following code to select the item Visual Basic when the form is loaded:

```
Private Sub Form1_Load(ByVal sender As System.Object, _
    ByVal e As System.EventArgs) Handles MyBase.Load
    ComboBox1.SelectedIndex = 2
End Sub
```

`SelectedIndex` is a property of the ComboBox control that determines the selected item. You can set it to an integer value from within your code to select an item on the control, and you can also use it to retrieve the index of the selected item in the list. Instead of comparing strings, we can compare the `SelectedIndex` property to the value that corresponds to the index of the item Visual Basic, with a statement such as the following:

```
If ComboBox1.SelectedIndex = 2 Then
    MsgBox("We have a winner!")
Else
    MsgBox(ComboBox1.Text & "is not a bad language.")
End If
```

The `Text` property of the ComboBox control returns the text on the control, and we use it to print the selected language's name. Of course, if you insert or remove items from the list, you must edit the code accordingly. If you run the application and test it thoroughly, you'll realize

that there's a problem with the ComboBox control. Users can type a new string in the control, which will be interpreted as a language. By default, the ComboBox control allows users to type in something, in addition to selecting an item from the list. To change the control's behavior, select it on the form and locate its `DisplayStyle` property in the Properties window. Expand the list of possible settings for the control and change the property's value from `DropDown` to `DropDownList`. Run the application again and test it; our sample application has become bulletproof. It's a simple application, but you'll see more techniques for building robust applications in Chapter 4, "GUI Design and Event-Driven Programming."

The controls on the Toolbox are more than nice pictures we place on our forms. They encapsulate a lot of functionality and expose properties that allow us to adjust their appearance and their functionality. Most properties are usually set at design time, but quite frequently we change the properties of various controls from within our code.

Now that you're somewhat familiar with the process of building Windows applications, and before you look into any additional examples, I will quickly present the components of the Visual Studio IDE.

## Understanding the IDE Components

The IDE of Visual Studio 2008 contains numerous components, and it will take you a while to explore them. It's practically impossible to explain in a single chapter what each tool, window, and menu command does. We'll discuss specific tools as we go along and as the topics get more and more advanced. In this section, I will go through the basic items of the IDE — the ones we'll use in the following few chapters to build simple Windows applications.

### The IDE Menu

The IDE menu provides the following commands, which lead to submenus. Notice that most menus can also be displayed as toolbars. Also, not all options are available at all times. The options that cannot possibly apply to the current state of the IDE are either invisible or disabled. The Edit menu is a typical example. It's quite short when you're designing the form and quite lengthy when you edit code. The Data menu disappears altogether when you switch to the code editor — you can't use the options of this menu while editing code. If you open an XML document in the IDE, the XML command will be added to the main menu of Visual Studio.

#### FILE MENU

The File menu contains commands for opening and saving projects or project items, as well as commands for adding new or existing items to the current project. For the time being, use the `New > Project` command to create a new project, `Open > Project/Solution` to open an existing project or solution, `Save All` to save all components of the current project, and the Recent Projects submenu to open one of the recent projects.

#### EDIT MENU

The Edit menu contains the usual editing commands. Among these commands are the Advanced command and the IntelliSense command. Both commands lead to submenus, which are discussed next. Note that these two items are visible only when you're editing your code, and are invisible while you're designing a form.

**Edit > Advanced Submenu**

The more-interesting options of the Edit > Advanced submenu are the following:

**View White Space** Space characters (necessary to indent lines of code and make it easy to read) are replaced by periods.

**Word Wrap** When a code line's length exceeds the length of the code window, the line is automatically wrapped.

**Comment Selection/Uncomment Selection** *Comments* are lines you insert between your code's statements to document your application. Every line that begins with a single quote is a comment; it is part of the code, but the compiler ignores it. Sometimes, we want to disable a few lines from our code but not delete them (because we want to be able to restore them later). A simple technique to disable a line of code is to *comment it out* (insert the comment symbol in front of the line). This command allows you to comment (or uncomment) large segments of code in a single move.

**Edit > IntelliSense Submenu**

The Edit > IntelliSense menu item leads to a submenu with five options, which are described next. IntelliSense is a feature of the editor (and of other Microsoft applications) that displays as much information as possible, whenever possible. When you type the name of a control and the following period, IntelliSense displays a list of the control's properties and methods, so that you can select the desired one, rather than guessing its name. When you type the name of a function and the opening parenthesis, IntelliSense will display the syntax of the function — its arguments. The IntelliSense submenu includes the following options:

**List Members** When this option is on, the editor lists all the members (properties, methods, events, and argument list) in a drop-down list. This list will appear when you enter the name of an object or control followed by a period. Then you can select the desired member from the list with the mouse or with the keyboard. Let's say your form contains a control named *TextBox1* and you're writing code for this form. When you enter the name of the control followed by a period (**TextBox1.**), a list with the members of the TextBox control will appear (as seen in Figure 1.12).

In addition, a description of the selected member is displayed in a ToolTip box, as you can see in the same figure. Select the *Text* property and then enter the equal sign, followed by a string in quotes, as follows:

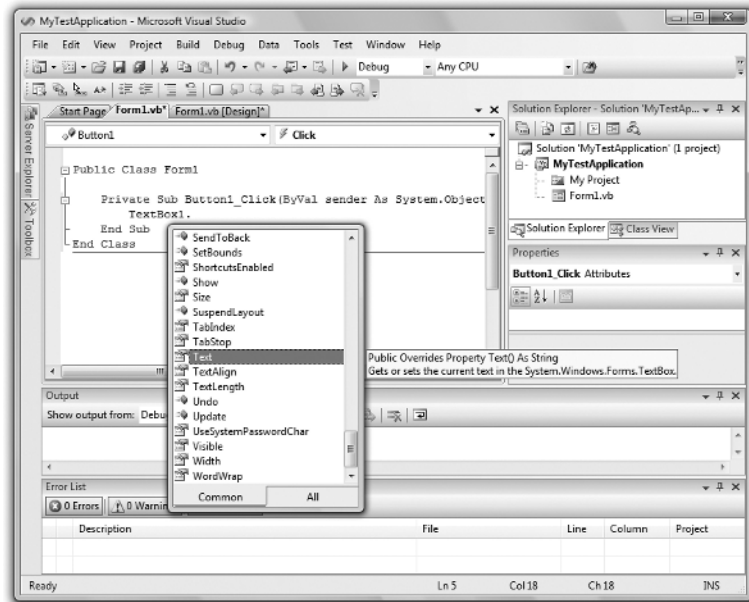
```
TextBox1.Text = "Your User Name"
```

If you select a property that can accept a limited number of settings, you will see the names of the appropriate constants in a drop-down list. If you enter the following statement, you will see the constants you can assign to the property (see Figure 1.13):

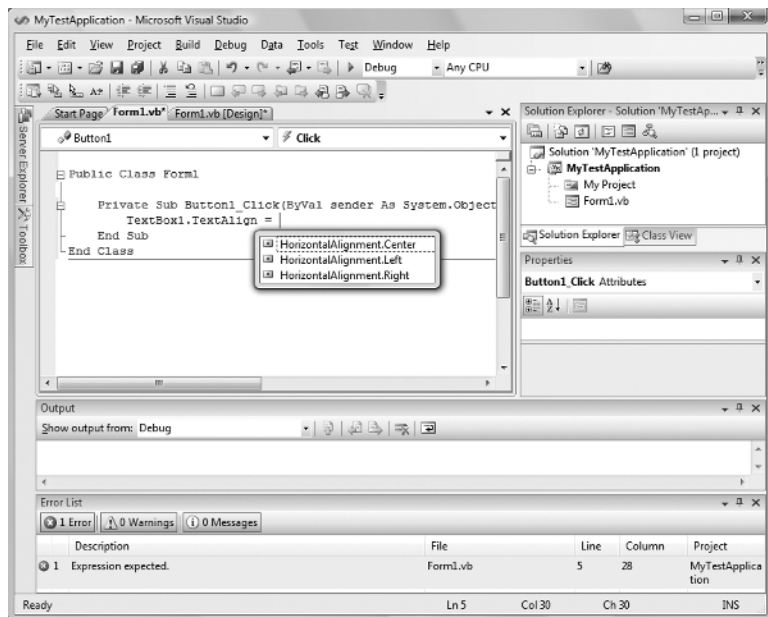
```
TextBox1.TextAlign =
```

Again, you can select the desired value with the mouse. The drop-down list with the members of a control or object (the Members list) remains open until you type a terminator key (the Esc or End key) or select a member by pressing the space bar or the Enter key.

**FIGURE 1.12**  
Viewing the members of a control in the IntelliSense drop-down list



**FIGURE 1.13**  
Viewing the possible settings of a property in the IntelliSense drop-down list



**Parameter Info** While editing code, you can move the pointer over a variable, method, or property and see its declaration in a yellow pop-up box. You can also jump to the variable's definition or the body of a procedure by choosing Go To Definition from the context menu that will appear if you right-click the variable or method name in the code window.

**Quick Info** This is another IntelliSense feature that displays information about commands and functions. When you type the opening parenthesis following the name of a function, for example, the function's arguments will be displayed in a ToolTip box (a yellow horizontal box). The first argument appears in bold font; after entering a value for this argument, the next one is shown in bold. If an argument accepts a fixed number of settings, these values will appear in a drop-down list, as explained previously.

**Complete Word** The Complete Word feature enables you to complete the current word by pressing Ctrl+spacebar. For example, if you type *TextB* and then press Ctrl+spacebar, you will see a list of words that you're most likely to type (TextBox, TextBox1, and so on).

**Insert Snippet** This command opens the Insert Snippet window at the current location in the code editor window. Code snippets, which are an interesting feature of Visual Studio 2008, are discussed in the section "Using Code Snippets" later in this chapter.

#### **Edit > Outlining Submenu**

A practical application contains a substantial amount of code in a large number of event handlers and custom procedures (subroutines and functions). To simplify the management of the code window, the Outlining submenu contains commands that collapse and expand the various procedures.

Let's say you're finished editing the `Click` event handlers of several buttons on the form. You can reduce these event handlers to a single line that shows the names of the procedures and a plus sign in front of them. You can expand a procedure's listing at any time by clicking the plus sign in front of its name. When you do so, a minus sign appears in front of the procedure's name, and you can click it to collapse the body of the procedure again. The Outlining submenu contains commands to handle the outlining of the various procedures, or turn off outlining and view the complete listings of all procedures. You will use these commands as you write applications with substantial amounts of code:

**Toggle Outlining Expansion** This option lets you change the outline mode of the current procedure. If the procedure's definition is collapsed, the code is expanded, and vice versa.

**Toggle All Outlining** This option is similar to the Toggle Outlining Expansion option, but it toggles the outline mode of the current document. A form is reduced to a single statement. A file with multiple classes is reduced to one line per class.

**Stop Outlining** This option turns off outlining and adds a new command to the Outlining submenu, Start Automatic Outlining, which you can select to turn on automatic outlining again.

**Collapse To Definitions** This option reduces the listing to a list of procedure headers.

#### **VIEW MENU**

This menu contains commands to display any toolbar or window of the IDE. You have already seen the Toolbars menu (in the "Starting a New Project" section). The Other Windows command leads to a submenu with the names of some standard windows, including the Output and Command windows. The Output window is the console of the application. The compiler's messages,

for example, are displayed in the Output window. The Command window allows you to enter and execute statements. When you debug an application, you can stop it and enter VB statements in the Command window.

### PROJECT MENU

This menu contains commands for adding items to the current project (an item can be a form, a file, a component, or even another project). The last option in this menu is the Project Properties command, which opens the project's Properties Pages. The Add Reference and Add Web Reference commands allow you to add references to .NET components and web components, respectively.

### BUILD MENU

The Build menu contains commands for building (compiling) your project. The two basic commands in this menu are Build and Rebuild All. The Build command compiles (builds the executable) of the entire solution, but it doesn't compile any components of the project that haven't changed since the last build. The Rebuild All command does the same, but it clears any existing files and builds the solution from scratch.

### DEBUG MENU

This menu contains commands to start or end an application, as well as the basic debugging tools. The basic commands of this menu are discussed briefly in Chapter 4 and in Appendix B.

### DATA MENU

This menu contains commands you will use with projects that access data. You'll see how to use this short menu's commands in the discussion of the visual database tools in Chapters 21 and 22 of the book.

### FORMAT MENU

The Format menu, which is visible only while you design a Windows or web form, contains commands for aligning the controls on the form. The commands of this menu are discussed in Chapter 4. The Format menu is invisible when you work in the code editor — its commands apply to the visible elements of the interface.

### TOOLS MENU

This menu contains a list of useful tools, such as the Macros command, which leads to a submenu with commands for creating macros. Just as you can create macros in a Microsoft Office application to simplify many tasks, you can create macros to automate many of the repetitive tasks you perform in the IDE. The last command in this menu, the Options command, leads to the Options dialog box, in which you can fully customize the environment. The Choose Toolbox Items command opens a dialog box that enables you to add more controls to the Toolbox. In Chapter 12, "Building Custom Windows Controls," you'll learn how to design custom controls and add them to the Toolbox.

### WINDOW MENU

This is the typical Window menu of any Windows application. In addition to the list of open windows, it also contains the Hide command, which hides all toolboxes, leaving the entire

window of the IDE devoted to the code editor or the Form Designer. The toolboxes don't disappear completely; they're all retracted, and you can see their tabs on the left and right edges of the IDE window. To expand a toolbox, just hover the mouse pointer over the corresponding tab.

### HELP MENU

This menu contains the various help options. The Dynamic Help command opens the Dynamic Help window, which is populated with topics that apply to the current operation. The Index command opens the Index window, in which you can enter a topic and get help on the specific topic.

### Toolbox Window

The Toolbox window contains all the controls you can use to build your application's interface. This window is usually retracted, and you must move the pointer over it to view the Toolbox. The controls in the Toolbox are organized in various tabs, so take a look at them to become familiar with the controls and their functions.

In the first few chapters, we'll work with the controls in the Common Controls and Menus & Toolbars tabs. The Common Controls tab contains the icons of the most common Windows controls. The Data tab contains the icons of the objects you will use to build data-driven applications (they're explored later in this book). The Dialogs tab contains controls for implementing the common dialog controls, which are so common in Windows interfaces; they're discussed in Chapter 8, "More Windows Controls."

### Solution Explorer Window

The Solution Explorer window contains a list of the items in the current solution. A *solution* can contain multiple projects, and each project can contain multiple items. The Solution Explorer displays a hierarchical list of all the components, organized by project. You can right-click any component of the project and choose Properties in the context menu to see the selected component's properties in the Properties window. If you select a project, you will see the Project Properties dialog box. You will find more information on project properties in the following chapter.

If the solution contains multiple projects, you can right-click the project you want to become the startup form and select Set As StartUp Project. You can also add items to a project with the Add Item command of the context menu, or remove a component from the project with the Exclude From Project command. This command removes the selected component from the project, but doesn't affect the component's file on the disk. The Delete command removes the selected component from the project and also deletes the component's file from the disk.

### Properties Window

This window (also known as the Properties Browser) displays all the properties of the selected component and its settings. Every time you place a control on a form, you switch to this window to adjust the appearance of the control. You have already seen how to manipulate the properties of a control through the Properties window.

Many properties are set to a single value, such as a number or a string. If the possible settings of a property are relatively few, they're displayed as meaningful constants in a drop-down list. Other properties are set through a more elaborate interface. Color properties, for example, are set from within a Color dialog box that's displayed right in the Properties window. Font properties are set through the usual Font dialog box. Collections are set in a Collection Editor dialog box,

in which you can enter one string for each item of the collection, as you did for the items of the ComboBox control earlier in this chapter.

If the Properties window is hidden, or if you have closed it, you can either choose View > Properties Window, or right-click a control on the form and choose Properties. Or you can simply press F4 to bring up this window. There will be times when a control might totally overlap another control, and you won't be able to select the hidden control and view its properties. In this case, you can select the desired control in the ComboBox at the top of the Properties window. This box contains the names of all the controls on the form, and you can select a control on the form by selecting its name on this box.

## Output Window

The Output window is where many of the tools, including the compiler, send their output. Every time you start an application, a series of messages is displayed in the Output window. These messages are generated by the compiler, and you need not understand them at this point. If the Output window is not visible, choose View > Other Windows > Output from the menu.

## Command and Immediate Windows

While testing a program, you can interrupt its execution by inserting a so-called *breakpoint*. When the breakpoint is reached, the program's execution is suspended, and you can execute a statement in the Immediate window. Any statement that can appear in your VB code can also be executed in the Immediate window. To evaluate an expression, enter a question mark followed by the expression you want to evaluate, as in the following samples, where *result* is a variable in the program you interrupted:

```
? Math.Log(35)
? "The answer is " & result.ToString
```

You can also send output to this window from within your code with the `Debug.WriteLine` and `Debug.WriteLine` methods. Actually, this is a widely used debugging technique — to print the values of certain variables before entering a problematic area of the code. There are more elaborate tools to help you debug your application, and you'll find a discussion in Appendix B, but printing a few values to the Immediate window is a time-honored practice in programming with VB.

In many of the examples of this book, especially in the first few chapters, I use the `Debug.WriteLine` statement to print something to the Immediate window. To demonstrate the use of the `DateDiff()` function, for example, I'll use a statement like the following:

```
Debug.WriteLine(DateDiff(DateInterval.Day, #3/9/2007#, #5/15/2008#))
```

When this statement is executed, the value 433 will appear in the Immediate window. This statement demonstrates the syntax of the `DateDiff()` function, which returns the difference between the two dates in days. Sending some output to the Immediate window to test a function or display the results of intermediate calculations is a common practice.

To get an idea of the functionality of the Immediate window, switch back to your first sample application and insert the `Stop` statement after the `End If` statement in the button's `Click` event handler. Run the application, select a language, and click the button on the form. After displaying a message box, the application will reach the `Stop` statement and its execution will be suspended.



You'll see the Immediate window at the bottom of the IDE. If it's not visible, open the Debug menu and choose Windows > Immediate. In the Immediate window, enter the following statement:

```
? ComboBox1.Items.Count
```

Then press Enter to execute it. Notice that IntelliSense is present while you're typing in the Immediate window. The expression prints the number of items in the ComboBox control. (Don't worry about the numerous properties of the control and the way I present them here; they're discussed in detail in Chapter 6, "Basic Windows Controls.") As soon as you press Enter, the value 5 will be printed on the following line.

You can also manipulate the controls on the form from within the Immediate window. Enter the following statement and press Enter to execute it:

```
ComboBox1.SelectedIndex = 4
```

The fifth item on the control will be selected (the indexing of the items begins with 0). However, you can't see the effects of your changes, because the application isn't running. Press F5 to resume the execution of the application and you will see that the item Cobol is now selected in the ComboBox control.

The Immediate window is available only while the application's execution is suspended. To continue experimenting with it, click the button on the form to evaluate your choice. When the Stop statement is executed again, you'll be switched to the Immediate window.

Unlike the Immediate window, the Command window is available at design time. The Command window allows you to access all the commands of Visual Studio by typing their names in this window. If you enter the string **Edit** followed by a period, you will see a list of all commands of the Edit menu, including the ones that are not visible at the time, and you can invoke any of these commands and pass arguments to them. For example, if you enter **Edit.Find "Margin"** in the Command window and then press Enter, the first instance of the string *Margin* will be located in the open code window. To start the application, you can type **Debug.Start**. You can add a new project to the current solution with the **AddProj** command, and so on. Most developers hardly ever use this window in designing or debugging applications.

## Error List Window

This window is populated by the compiler with error messages, if the code can't be successfully compiled. You can double-click an error message in this window, and the IDE will take you to the line with the statement in error — which you should fix. Change the **MsgBox()** function name to **MssgBox()**. As soon as you leave the line with the error, the name of the function will be underlined with a wiggly red line and the following error description will appear in the Error List window:

```
Name 'MssgBox' is not declared
```

## Setting Environment Options

The Visual Studio IDE is highly customizable. I will not discuss all the customization options here, but I will show you how to change the default settings of the IDE. Open the Tools menu and select Options (the last item in the menu). The Options dialog box appears, in which you can set all the

options regarding the environment. Figure 1.14 shows the options for the fonts of the various items of the IDE. Here you can set the font for the Text Editor, dialog boxes, toolboxes, and so on. Select an item in the tree in the left pane list and then set the font for this item in the box below.

**FIGURE 1.14**  
The Fonts And Colors options

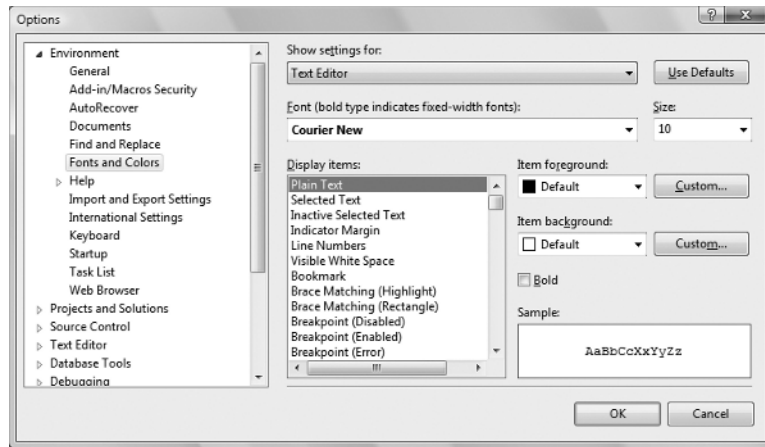
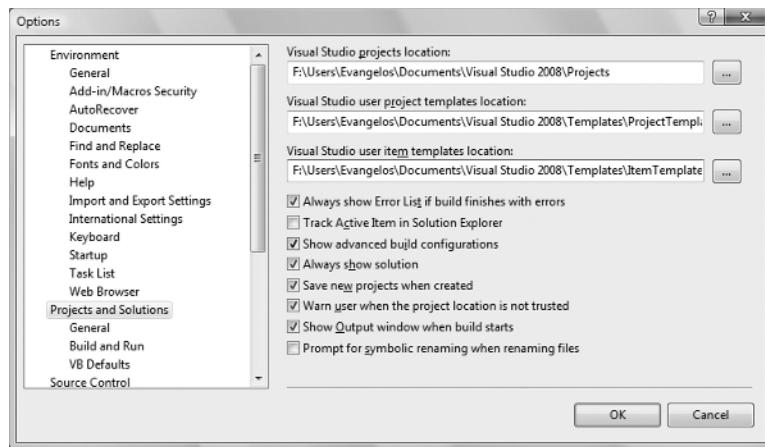


Figure 1.15 shows the Projects And Solutions options. The top box indicates the default location for new projects. The Save New Projects When Created check box determines whether the editor will create a new folder for the project when it's created. If you uncheck this box, then Visual Studio will create a folder in the Temp folder. Projects in the Temp folder will be removed when you run the Disk Cleanup utility to claim more space on your hard drives.

**FIGURE 1.15**  
The Projects And Solutions options



By default, Visual Studio saves the changes to the current project every time you press F5. You can change this behavior by setting the Before Building option in the Build And Run page, under the Project And Solutions branch. If you change this setting, you must save your project from time to time with the File > Save All command.

Most of the tabs in the Options dialog box are straightforward, and you should take a look at them. If you don't like some of the default aspects of the IDE, this is the place to change them. If

you switch to the Basic item under the Text Editor branch of the tree in the left pane of the Options dialog box, you will find the Line Numbers option. Select this check box to display numbers in front of each line in the code window. The Options dialog box contains a lot of options for customizing your work environment, and it's worth exploring on your own.

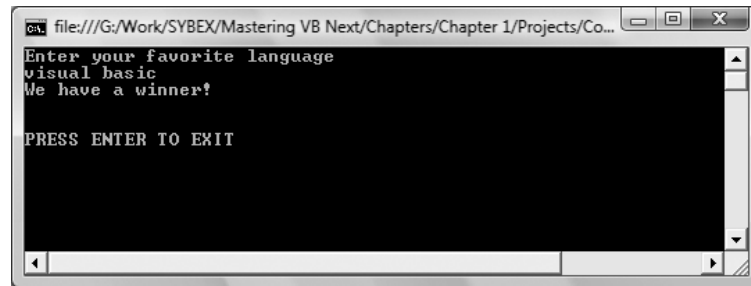
## Building a Console Application

Apart from Windows applications, you can use Visual Studio 2008 to build applications that run in a command prompt window. The command prompt window isn't really a DOS window, even though it looks like one. It's a text window, and the only way to interact with an application is to enter lines of text and read the output generated by the application, which is displayed in this text window, one line at a time. This type of application is called a *console application*, and I'm going to demonstrate console applications with a single example. We will not return to this type of application later in the book because it's not what you're supposed to do as a Windows developer.

The console application you'll build in this section, `ConsoleApplication1`, prompts the user to enter the name of her favorite language. It then prints the appropriate message on a new line, as shown in Figure 1.16.

**FIGURE 1.16**

A console application uses the command prompt window to interact with the user.



Start a new project. In the New Project dialog box, select the template Console Application. You can also change its default name from `ConsoleApplication1` to a more descriptive name. For this example, don't change the application's name.

A console application doesn't have a user interface, so the first thing you'll see is the code editor's window with the following statements:

```
Module Module1
    Sub Main()
    End Sub
End Module
```

Unlike a Windows application, which is a class, a console application is a module. `Main()` is the name of a subroutine that's executed automatically when you run a console application. The code you want to execute must be placed between the statements `Sub Main()` and `End Sub`. Insert the statements shown in Listing 1.3 in the application's `Main()` subroutine.

---

**LISTING 1.3:** Console Application

```
Module Module1
  Sub Main()
    Console.WriteLine("Enter your favorite language")
    Dim language As String
    language = Console.ReadLine()
    language = language.ToUpper
    If language = "VISUAL BASIC" Or _
       language = "VB" Or
       language = "VB.NET" Then
      Console.WriteLine("We have a winner!")
    Else
      Console.WriteLine(language & "is not a bad language.")
    End If
    Console.WriteLine()
    Console.WriteLine()
    Console.WriteLine("PRESS ENTER TO EXIT")
    Console.ReadLine()
  End Sub
End Module
```

---

This code is quite similar to the code of the equivalent Windows applications we developed earlier, except that it uses the `Console.WriteLine` statement to send its output to the command prompt window instead of a message box.

A console application doesn't react to events because it has no visible interface. However, it's easy to add some basic elements of the Windows interface to a console application. If you change the `Console.WriteLine` method call into the `MsgBox()` function, the message will be displayed in a message box.

The reason to build a console application is to test a specific feature of the language without having to build a user interface. Many of the examples in the documentation are console applications; they demonstrate the topic at hand and nothing more. If you want to test the `DateDiff()` function, for example, you can create a new console application and enter the lines of Listing 1.4 in its `Main()` subroutine.

---

**LISTING 1.4:** Testing the *DateDiff()* Function with a Console Application

```
Sub Main()
  Console.WriteLine(DateDiff(DateInterval.Day, #3/9/2000#, #5/15/2008#))
  Console.WriteLine("PRESS ENTER TO EXIT")
  Console.ReadLine()
End Sub
```

---

The last two lines will be the same in every console application you write. Without them, the command prompt window will close as soon as the `End Sub` statement is reached, and you won't

have a chance to see the result. The `Console.ReadLine` method waits until the user presses the Enter key.

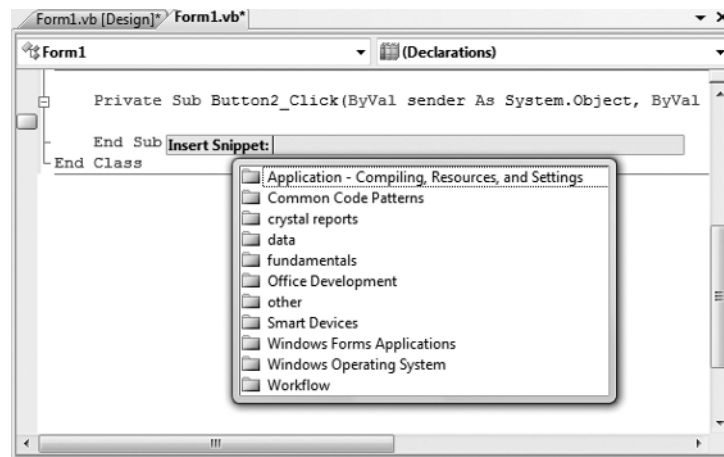
Console applications are convenient for testing short code segments, but Windows programming is synonymous with designing graphical user interfaces, so you won't find any more console applications in this book.

## Using Code Snippets

Visual Basic 2008 comes with a lot of predefined code snippets for selected actions, and you can insert these snippets in your code as needed. Let's say you want to insert the statements for writing some text to a file, but you have no idea how to access files. Create an empty line in the listing (press the Enter key a couple of times at the end of a code line). Then open the Edit menu and choose IntelliSense > Insert Snippet (or right-click somewhere in the code window and choose Insert Snippet from the context menu).

You will see on the screen a list of the snippets, organized in folders according to their function, as shown in Figure 1.17. Select the *fundamentals* folder, which will display another list of options: *collections and arrays*, *datatypes*, *filesystem*, and *math*. Double-click the *filesystem* item to see a list of common file-related tasks, as shown in Figure 1.18. Locate the item Write Text To A File in the list and double-click it to insert the appropriate snippet at the current location in the code window.

**FIGURE 1.17**  
The code snippets organized according to their function



The following snippet will be inserted in your code:

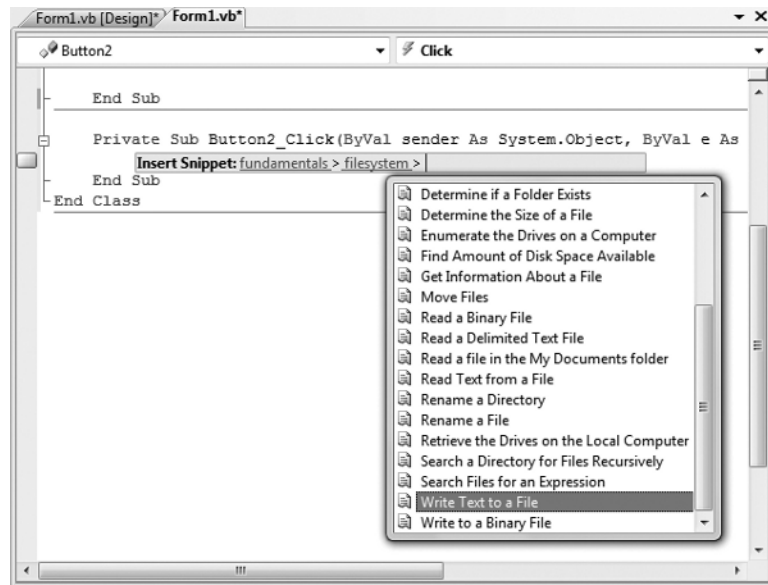
```
My.Computer.FileSystem.WriteAllText("C:\test.txt", "Text", True)
```

To write some text to a file, you need to call the `WriteAllText` method of the `My.Computer.FileSystem` object. You can replace the strings shown in the snippet with actual values. The first string is the filename, the second string is the text to be written to the file, and the last argument of the method determines whether the text will be appended to the file (if `False`) or will overwrite any existing text (if `True`).

The snippet shows you the basic statements for performing a common task, and you can edit the code inserted by Visual Studio as needed. A real-world application would probably prompt

the user for a filename via the File common dialog box and then use the filename specified by the user in the dialog box, instead of a hard-coded file name.

**FIGURE 1.18**  
Selecting a code snippet  
to insert in your code



As you program, you should always try to find out whether there's a snippet for the task at hand. Sometimes you can use a snippet without even knowing how it works. Although snippets can simplify your life, they won't help you understand the Framework, which is discussed in detail throughout this book.

## Using the My Object

You have probably noticed that the code snippets of Visual Studio use an entity called *My*, which is a peculiar object that was introduced with VB 2005 to simplify many programming tasks. As you saw in the preceding code snippet, the *My* object allows you to write some text to a file with a single statement, the `WriteAllText` method. If you're familiar with earlier versions of Visual Basic, you know that you must first open a file, and then write some text to it, and finally close the file. The *My* object allows you to perform all these operations with a single statement, as you saw in the preceding example.

Another example is the `Play` method, which you can use to play back a WAV file from within your code:

```
My.Computer.Audio.Play ("C:\Sounds\CountDown.wav")
```

You can also use the following expression to play back a system sound:

```
My.Computer.Audio.PlaySystemSound(System.Media.SystemSounds.Exclamation)
```

The method that plays back the sound is the `Play` method, and the method that writes text to a file is the `WriteAllText` method. However, you can't call them directly through the `My` object; they're not methods of the `My` object. If they were, you'd have to dig hard to find out the method you need. The `My` object exposes six components, which contain their own components. Here's a description of the basic components of the `My` object and the functionality you should expect to find in each component:

**My.Application** The `Application` component provides information about the current application. The `CommandLineArgs` property of `My.Application` returns a collection of strings, which are the arguments passed to the application when it was started. Typical Windows applications aren't called with command-line arguments, but it's possible to start an application and pass a filename as an argument to the application (the document to be opened by the application, for example). The `Info` property is an object that exposes properties such as `DirectoryPath` (the application's default folder), `ProductName`, `Version`, and so on.

**Computer** This component of the `My` object exposes a lot of functionality via a number of properties, many of which are objects. The `My.Computer.Audio` component lets you play back sounds. The `My.Computer.Clipboard` component lets you access the Clipboard. To find out whether the Clipboard contains a specific type of data, use the `ContainsText`, `ContainsImage`, `ContainsData`, and `ContainsAudio` methods. To retrieve the contents of the Clipboard, use the `GetText`, `GetImage`, `GetData`, and `GetAudioStream` methods. Assuming that you have a form with a `TextBox` control and a `PictureBox` control, you can retrieve text or image data from the Clipboard and display it on the appropriate control with the following statements:

```
If My.Computer.Clipboard.ContainsImage Then
    PictureBox1.Image = My.Computer.Clipboard.GetImage
End If
If My.Computer.Clipboard.ContainsText Then
    TextBox2.Text = My.Computer.Clipboard.GetText
End If
```

You may have noticed that using the `My` object in your code requires that you write long statements. You can shorten them substantially via the `With` statement, as shown next:

```
With My.Computer.Clipboard
    If .ContainsImage Then
        PictureBox1.Image = .GetImage
    End If
    If .ContainsText Then
        TextBox2.Text = .GetText
    End If
End With
```

When you're executing multiple statements on the same object, you can specify the object in a `With` statement and call its methods in the block of the `With` statement by specifying the method name prefixed with a period. The `With` statement is followed by the name of the object to which all following methods apply, and is terminated with the `End With` statement.

Another property of the `My.Computer` component is the `FileSystem` object that exposes all the methods you need to access files and folders. If you enter the expression `My.Computer.FileSystem` followed by a period, you will see all the methods exposed by the `FileSystem` component. Among them, you will find `DeleteFile`, `DeleteDirectory`, `RenameFile`, `RenameDirectory`, `WriteAllText`, `ReadAllText`, and many more. Select a method and then type the opening parenthesis. You will see the syntax of the method in a `ToolTip`. The syntax of the `CopyFile` method is as follows:

```
My.Computer.FileSystem.CopyFile( _
    sourceFileName As String, destinationFileName As String)
```

Just specify the path of the file you want to copy and the new file's name, and you're finished. This statement will copy the specified file to the specified location.

You will notice that the `ToolTip` box with the syntax of the `CopyFile` method has multiple versions, which are listed at the left side of the box along with arrow up and arrow down icons. Click these two buttons to see the next and previous versions of the method. The second version of the `CopyFile` method is as follows:

```
My.Computer.FileSystem.CopyFile( _
    sourceFileName As String, destinationFileName As String, _
    overwrite As Boolean)
```

The *overwrite* argument specifies whether the method should overwrite the destination file if it exists.

The third version of the method accepts a different third argument that determines whether the usual copy animation will be displayed as the file is being copied.

The various versions of the same method differ in the number and/or type of their arguments, and they're called overloaded forms of the method. Instead of using multiple method names for the same basic operation, the overloaded forms of a method allow you to call the same method name and adjust its behavior by specifying different arguments.

**Forms** This component lets you access the forms of the current application. You can also access the application's forms by name, so the `Forms` component isn't the most useful one.

**Settings** This component lets you access the application settings. These settings apply to the entire application and are stored in an XML configuration file. The settings are created from within Visual Studio, and you use the `Settings` component to read them.

**User** This component returns information about the current user. The most important property of the `User` component is the `CurrentPrincipal` property, which is an object that represents the credentials of the current user.

**WebServices** The `WebServices` component represents the web services referenced by the current application.

The `My` object gives beginners unprecedented programming power and allows you to perform tasks that would require substantial code if implemented with earlier versions of the language, not to mention the research it would take to locate the appropriate methods in the Framework. You can explore the `My` object on your own and use it as needed. `My` is not a substitute for learning



the language and the Framework. It can help you initially, but you can't go far without learning the methods of the Framework for handling files or any other feature.

Let's say you want to locate all the files of a specific type in a folder, including its subfolders. Scanning a folder and its subfolders to any depth is quite a task (you'll find the code in Chapter 15, "Accessing Folders and Files"). You can do the same with a single statement by using the `My` object:

```
Dim files As ReadOnlyCollection(Of String)
files = My.Computer.FileSystem.GetFiles("D:\Data", True, "*.txt")
```

The `GetFiles` method populates the `files` collection with the pathnames of the text files in the folder `D:\Data` and its subfolders. However, it won't help you if you want to process each file in place. Moreover, this `GetFiles` method is synchronous: If the folder contains many subfolders with many files, it will block the interface until it retrieves all the files. In Chapter 15, you'll see the code that retrieves filenames and adds them to a control as it goes along.

If you're already familiar with VB, you may think that the `My` object is an aid for the absolute beginner or the nonprogrammer. This isn't true. VB is about productivity, and the `My` object can help you be more productive with your daily tasks, regardless of your knowledge of the language or programming skills. If you can use `My` to save a few (or a few dozen) statements, do it. There's no penalty for using the `My` object, because the compiler replaces the methods of the `My` object with the equivalent method calls to the Framework.

## The Bottom Line

**Navigate the integrated development environment of Visual Studio.** To simplify the process of application development, Visual Studio provides an environment that's common to all languages, known as an integrated development environment (IDE). The purpose of the IDE is to enable the developer to do as much as possible with visual tools, before writing code. The IDE provides tools for designing, executing, and debugging your applications. It's your second desktop, and you'll be spending most of your productive hours in this environment.

**Master It** Describe the basic components of the Visual Studio IDE.

**Understand the basics of a Windows application.** A Windows application consists of a *visual interface* and *code*. The visual interface is what users see at runtime: a form with controls with which the user can interact — by entering strings, checking or clearing check boxes, clicking buttons, and so on. The visual interface of the application is designed with visual tools. The visual elements incorporate a lot of functionality, but you need to write some code to react to user actions.

**Master It** Describe the process of building a simple Windows application.

